

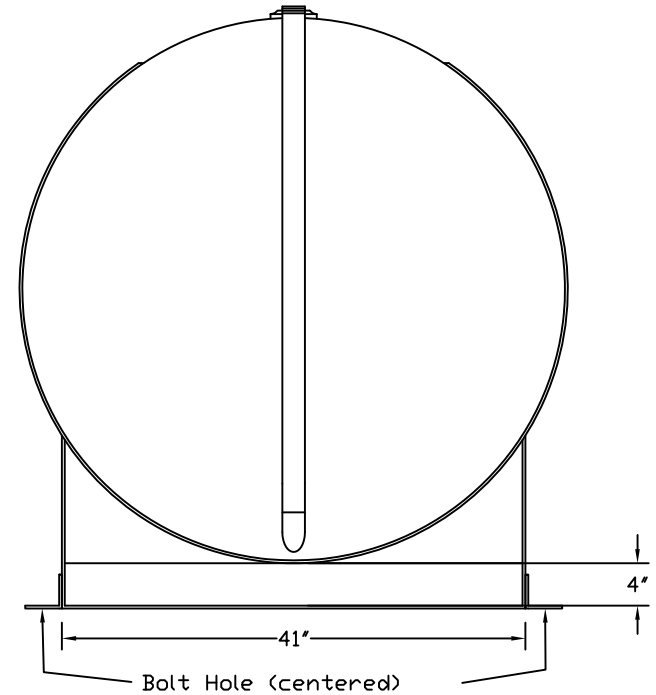
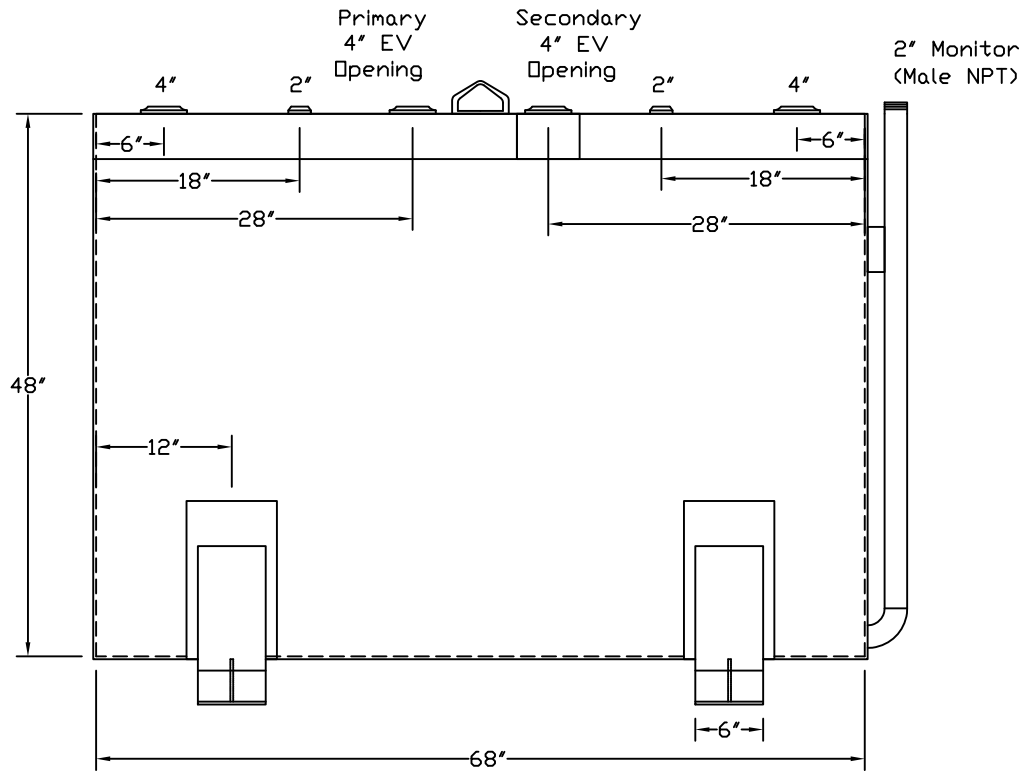
**Bart's Electrical Service**  
**Fuel gard**  
**(213) 595-5075**

Tank for Stationary Use Only

Capacity \_\_\_\_\_ 520 Gallons  
 Design \_\_\_\_\_ Aboveground Doublewall  
 Code \_\_\_\_\_ UL 142  
 Test Pres. \_\_\_\_\_ 5 PSI

Heads Primary \_\_\_\_\_ 10 Ga.  
 Shell Primary \_\_\_\_\_ 12 Ga.  
 Heads Secondary \_\_\_\_\_ 12 Ga.  
 Shell Secondary \_\_\_\_\_ 12 Ga.

Paint Ext. \_\_\_\_\_ Red Primer  
 Paint Int. \_\_\_\_\_  
 Weight Empty \_\_\_\_\_ 1,100 lbs.  
 Rev.# \_\_\_\_\_ Date: \_\_\_\_\_



Customer: \_\_\_\_\_ Drg. Date: \_\_\_\_\_

Quoted Lead Times Begin Upon Receipt of signed Approved Drawing, Which Must be Returned Before Production Can Begin.

Drawing Approved By: \_\_\_\_\_