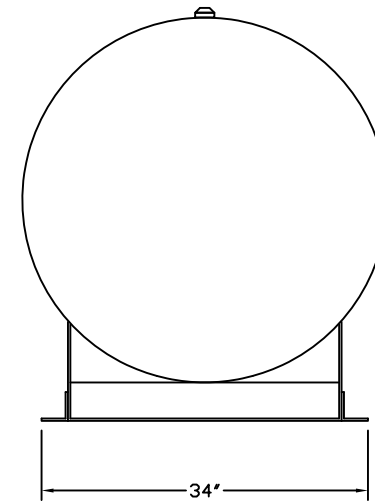
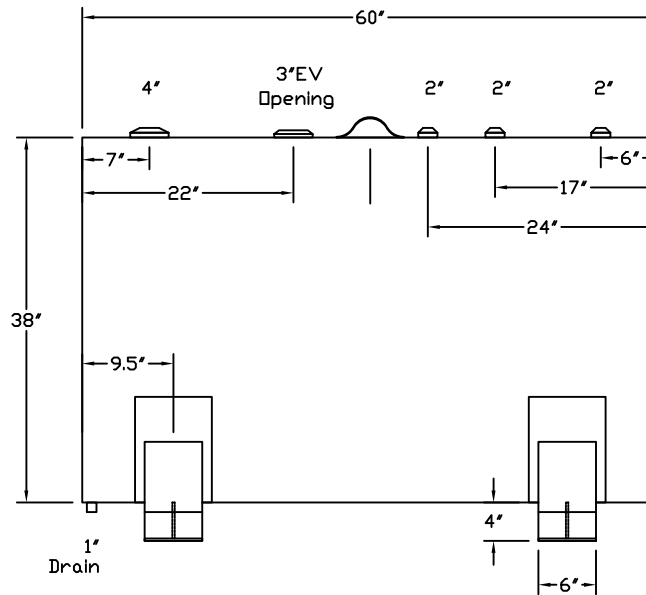
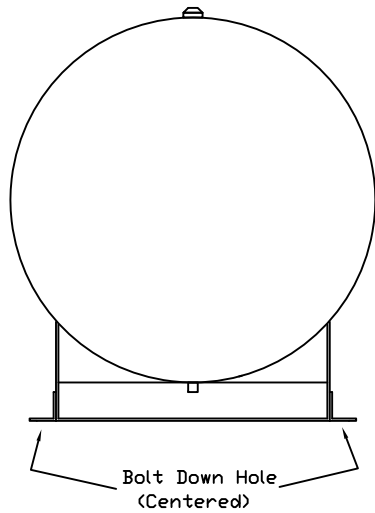


**Bart's Electrical Service**  
**Fuel gard**  
**(213) 595-5075**

Tank For Stationary Use Only

Capacity	300 Gallons	Heads Primary	12 Gauge	Paint Ext.	Red Primer
Design	Singlewall	Shell Primary	12 Gauge	Paint Int.	-----
Code	UL 142	Heads Secondary	-----	Weight Empty	450 lbs.
Test Pres.	5 PSI	Shell Secondary	-----	Rev.#	Date:



Customer: \_\_\_\_\_ Drg. Date: \_\_\_\_\_

Quoted Lead Times Begin Upon Receipt of signed Approved Drawing, Which Must be Returned Before Production Can Begin.

Drawing Approved By:

-----